

INEE Conflict Sensitive Education Pack



Photo by Stacy Hughes
©

Why is there a need to focus on Conflict Sensitive Education?

- Access to quality education is a human right
- The right to education is not being fully realized
- Education and conflict have a bi-directional and complex relationship
- Education programs and policies in conflict-affected and fragile contexts should be conflict sensitive

What is Conflict Sensitive Education?

It is the process to:

- 1) Understand the context
- 2) Analyze the 2-way relationship of context and education
- 3) Act to minimize the negative impact and maximize the positive impact of education on conflict

What are the strategies for Conflict Sensitive Education?

1. Strategies for conflict sensitive analysis, participation and coordination

Ex: Consult members from diverse social groups

2. Strategies for conflict sensitive access and learning environment

Ex: Consider safe access to learning environment, water points and latrines

3. Strategies for conflict sensitive teaching and learning

Ex: Provide training for teachers on how to create and deliver lessons that avoid stereotypes and bias

4. Strategies for conflict sensitive practices for teachers and other education personnel

Ex: Teacher recruitment and selection is a transparent, participatory process that avoids bias towards any one group

5. Strategies for conflict sensitive education policy

Ex: Coordinate with a wide range of stakeholders, including groups previously marginalized

What are the key concepts around Conflict Sensitive Education?

- **Conflict analysis**
 - Systematic study of the background and history, root causes, actors, and dynamics of a conflict
- **Conflict-affected and fragile contexts**
 - Any situation impacted (or expected to be) by violence or armed conflict
- **Peacebuilding**
 - Activities that aim explicitly to address the root causes of conflict and contribute to peace at large

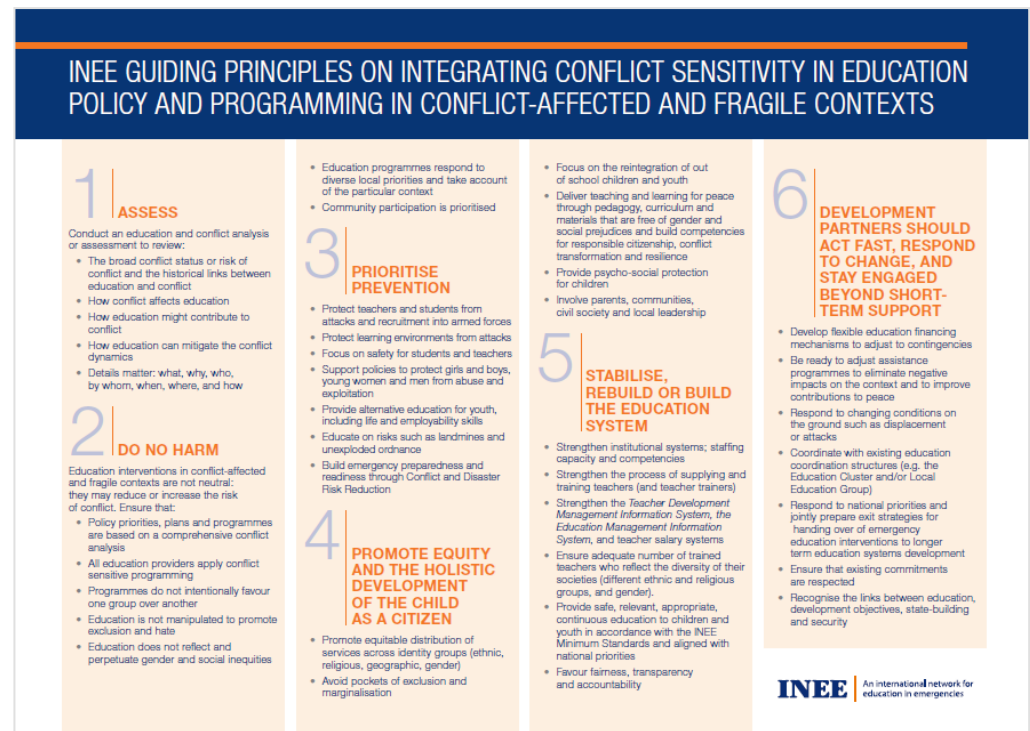
What actions can you take to ensure that your education programs and policies are conflict sensitive?

What additional INEE Resources are associated with CSE?

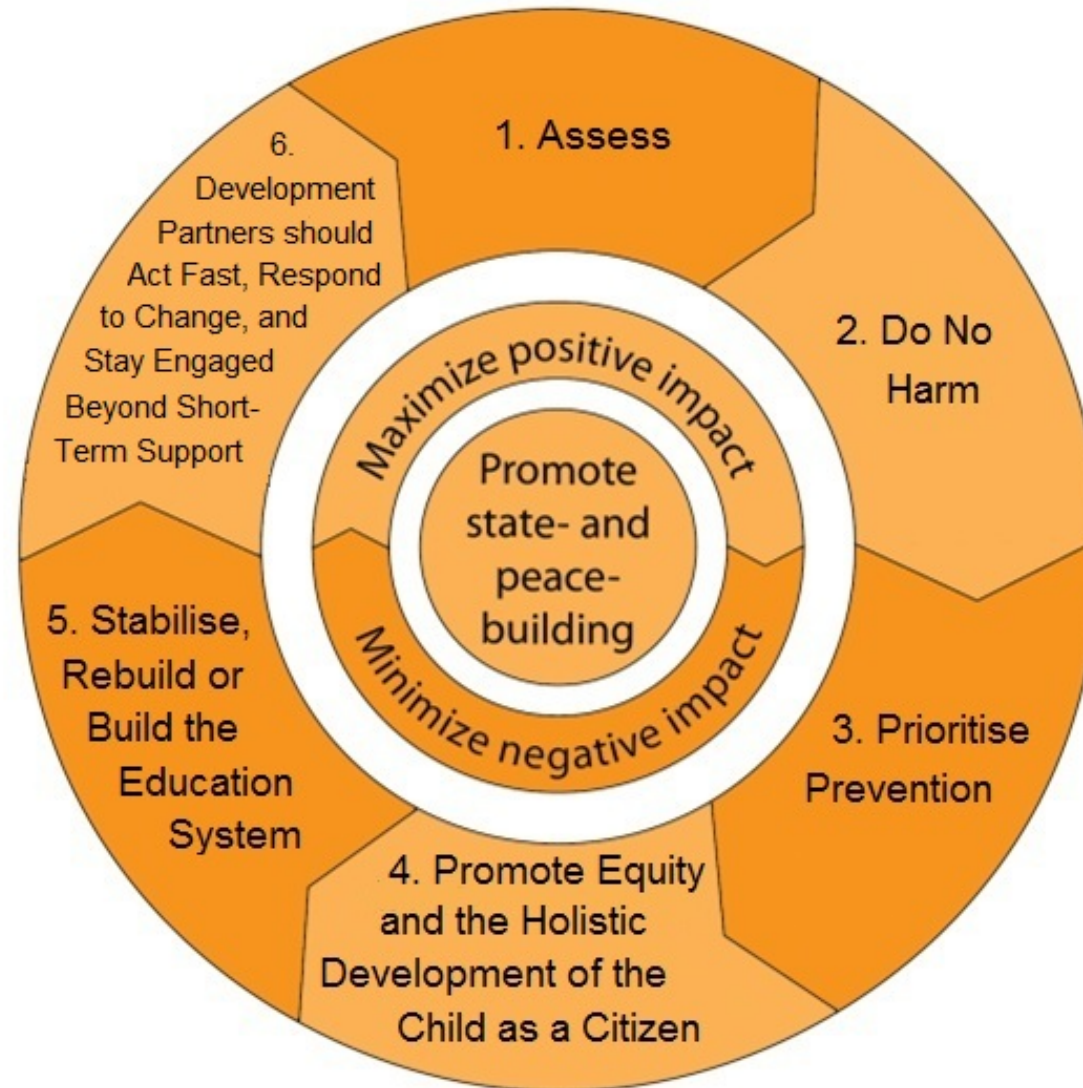
- **Guiding Principles**
 - Ensure that conflict sensitivity is incorporated into education proposals, policies and programs
- **Guidance Note**
 - Offers strategies for developing and implementing conflict sensitive education programmes and policies
- **Reflection Tool**
 - Used during assessment, design, implementation/management, monitoring and evaluation
 - Principles include community participation, equity, access, quality, relevance and protection

What are the INEE Guiding Principles on Integrating Conflict Sensitivity in Education Policy and Programming in Conflict-Affected and Fragile Contexts?

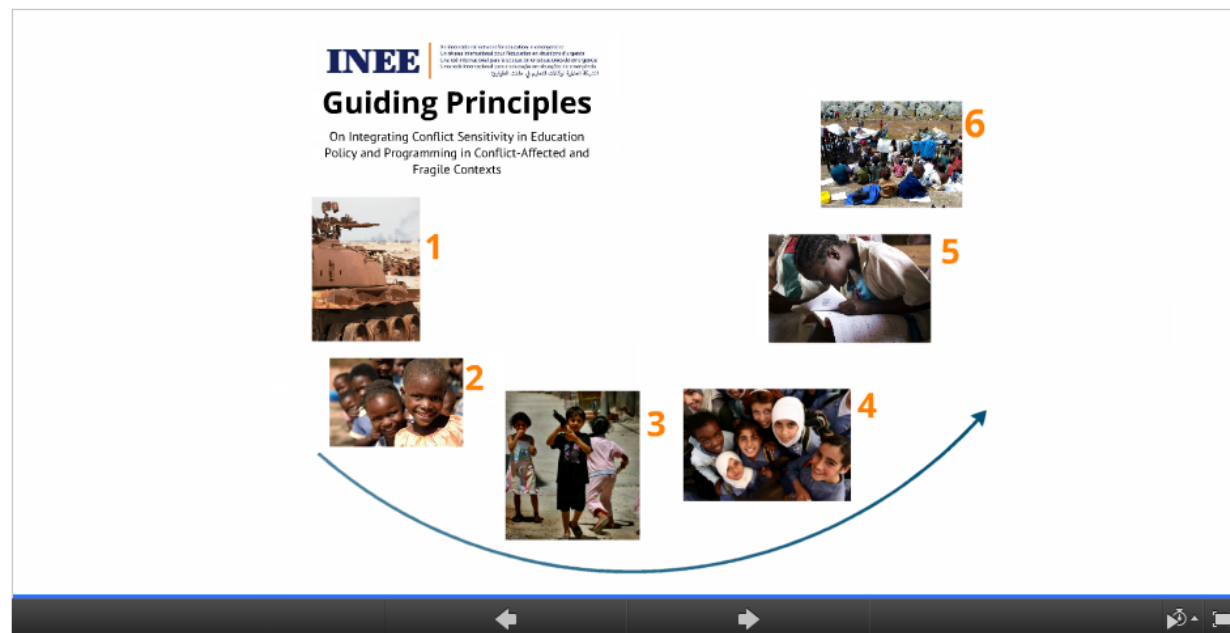
- Guiding Principles for all stakeholders concerned with education in CAF contexts
- Useful to ensure that conflict sensitivity is incorporated in education proposals, policies, investments and programmes



INEE Guiding Principles on Integrating Conflict Sensitivity in Education Policy and Programming in Conflict-Affected and Fragile Contexts



Prezi introducing INEE Guiding Principles



[Watch](#)

What is the INEE Guidance Note on Conflict Sensitive Education?

- Strategies for development and implementation of conflict sensitive programs and policies
- All types of education and all phases of conflict
- Adapt to each unique context
- INEE Minimum Standards as a framework
- Case studies, Conflict Analysis, Quick Reference Tool



What is the INEE Reflection Tool for Designing and Implementing Conflict Sensitive Education Programmes in Conflict-Affected and Fragile Contexts?

- Designed for education programme staff and other stakeholders concerned with education in conflict-affected and fragile contexts
- Can be used to ensure that conflict sensitivity is integrated in education at all stages of the programme cycle: assessment, design, implementation/management, monitoring and evaluation

REFLECTION TOOL FOR DESIGNING AND IMPLEMENTING CONFLICT SENSITIVE EDUCATION PROGRAMMES IN CONFLICT-AFFECTED AND FRAGILE CONTEXTS

2

QUESTIONS	WHAT IS YOUR RESPONSE TO THE QUESTION? (yes/partially/no) Please give more detail to your answers when available and appropriate.	WHAT FOLLOW UP ACTION, IF ANY, WILL BE TAKEN? WHO WILL BE RESPONSIBLE? (For further guidance please refer to the following domains in the INEE Minimum Standards and the INEE Guidance Note on Conflict Sensitive Education, as well as the List of Additional Resources.)
1. PROJECT CYCLE: ASSESSMENT PHASE		
A. ASSESSMENT AND CONFLICT ANALYSIS		Foundational Standards Domain Community Participation Standard 1: Participation Community Participation Standard 2: Resources Analysis Standard 1: Assessment Analysis Standard 3: Monitoring
1.1 Have education stakeholders analysed the conflict context and how the proposed education programme and conflict may interact? (e.g. stakeholders could include: parent teacher association, government officials, youth, women, men, girls, boys, different ethnic, religious or social groups, etc.)		
1.2 Does the analysis include different perspectives of stakeholders within the education community?		
1.3 Does the analysis include an understanding of how different stakeholders are both affected by and also drive conflict?		

INEE Reflection Tool for Designing and Implementing Conflict Sensitive Education Programmes in Conflict-Affected and Fragile Contexts



INEE Conflict Sensitive Education Video



[Play](#)

Thank you!

For more information and tools:

INEE Toolkit (
toolkit.ineesite.org/conflict_sensitive_education)

INEE Website
(ineesite.org/conflict-sensitive-education)

Become a member (ineesite.org/join)

Share your experience with conflict sensitive
education: minimumstandards@ineesite.org and
educationfragility@ineesite.org